

# **Adobe** PageMaker Plug-in Pack

Adobe® PageMaker® Plug-in Pack software adds popular PageMaker features to the standard feature set of Adobe InDesign® CS software. It also provides in-depth training materials to help PageMaker users make the switch efficiently. The PageMaker Plug-in Pack ships with InDesign CS PageMaker Edition and with the Adobe Creative Suite; it is also available as a standalone download through the Adobe Store.

[http://www.adobe.com/products/indesign/pm\\_pack.html](http://www.adobe.com/products/indesign/pm_pack.html)

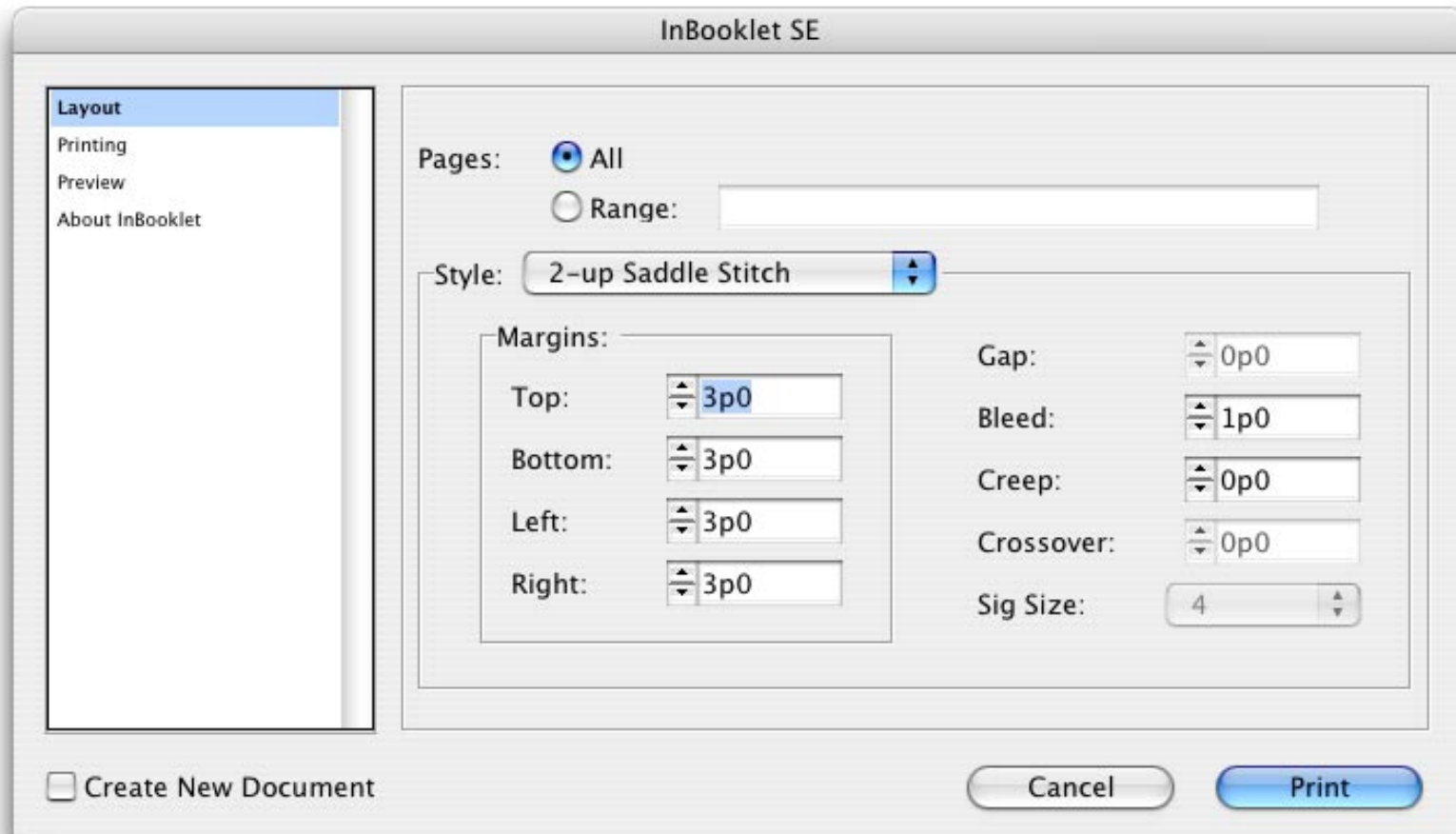
## **Features for “PageMaker People”**

- Convert PageMaker 6.0 documents and templates (InDesign CS can convert 6.5-7.0.x without the Plug-In Pack installed).
- Increased ability to convert damaged PageMaker files.
- Position tool: similar (kind of) to the Crop tool in PageMaker.
- PageMaker compatible keyboard shortcuts.
- PageMaker toolbar: similar to the toolbar in PageMaker 7.
- PageMaker-to-InDesign training materials.

## **Not Just for “PageMaker People”**

- **Template Browser and Professional Template Sets:** more than 80 templates created by leading designers. Use the Template Browser to browse, add, delete, and reorganize templates.
- **Bullets and Numbering:** automatic bullets and numbered lists. Fully configurable via the Paragraph Palette Menu: Bullets and Numbering.
- **InBooklet Special Edition Plug-In:** imposition tool similar to PageMaker’s Build Booklet plugin. Developed by ALAP (<http://www.alap.com>).
- **Data Merge:** merge a comma separated or tab delimited text file, exported from any database, with an InDesign template to automate creation of catalogs, mailing labels, etc.

# Using InBooklet SE



**Pages:** which pages to include in the imposition process.

**Style:** choose from 2-up Saddle Stitch, Perfect, and other bindings.

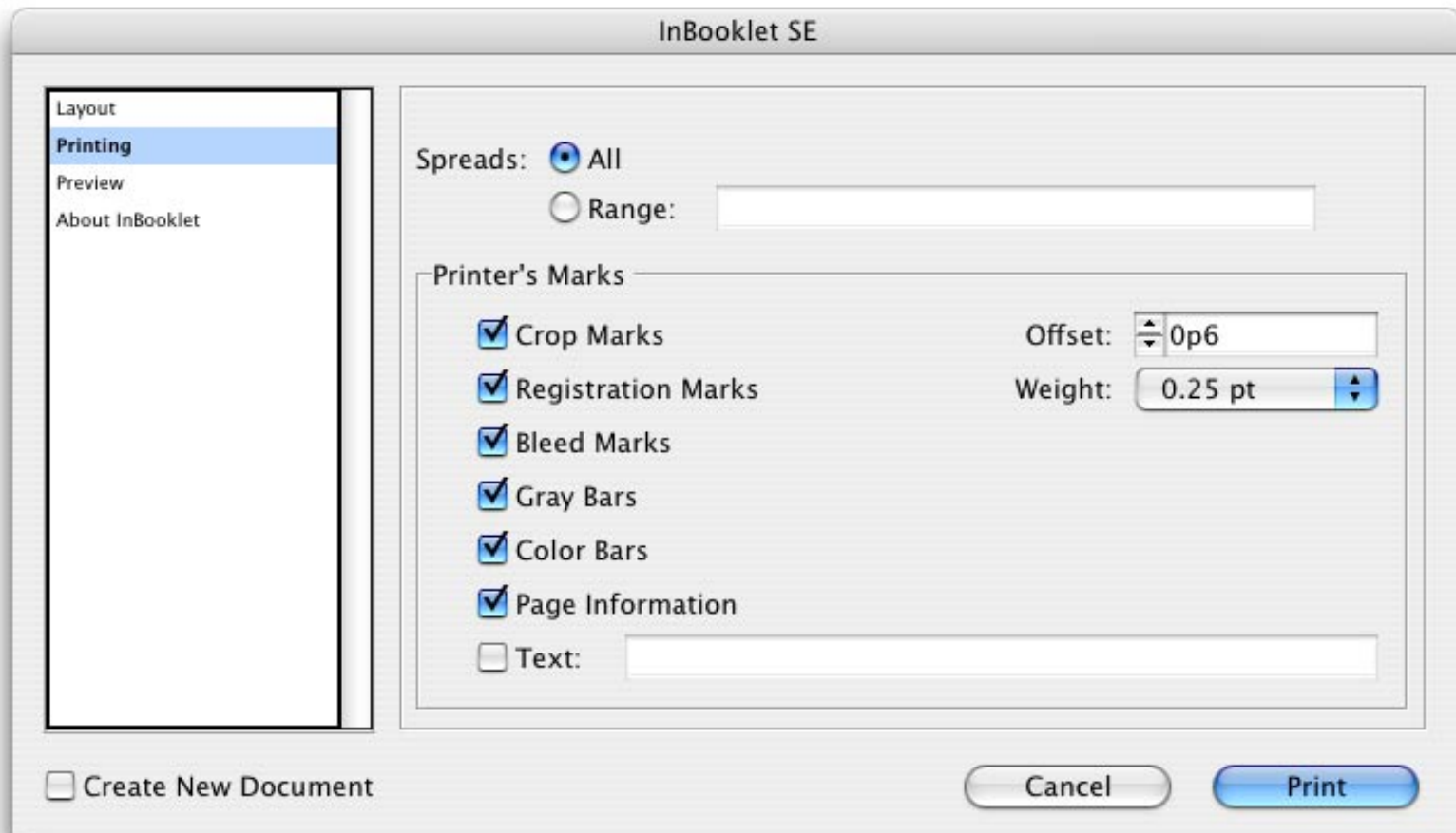
**Margins:** added white space beyond the edges of the original pages (i.e. margins for the new spreads).

-Margins should be big enough to contain bleeds and marks, if included.

**Bleed:** amount of bleed to include. Must be less than margins.

**Creep:** accounts for dislocation of content due to paper thickness.

**Gap & Crossover:** not used in booklet printing.



**Spreads:** which imposed spreads to include in the output.

**Marks:** which printer marks to include.

**Offset/Weight:** refer to placement and stroke of the marks.

**Preview** your imposed document, then **Print**, or check "**Create new document**" and click **OK**.

## **InBooklet SE: Additional Notes**

- InBooklet SE does not work with InDesign book files. The full version does.
- Every time you use InBooklet SE it uses the same default settings; you cannot save imposition presets. The full version allow you to do this.
- InBooklet makes a new master page for every spread of the new document.
- Recommend NOT editing the document created by InBooklet; edit original, then re-impose.

## Using Data Merge

1. Generate a suitable data file, consisting of plain, unformatted comma separated or tab delimited text. Most database applications can easily export suitable data files. The first row of this data file will be the “header” row which gives the name for each field.
2. Make a new InDesign document that has the page size you need for the merged document.
3. Open the Data Merge Palette (in the Window menu). Go to the Palette Menu and choose “Select Data Source” and choose your text file. The fields in your data appear in the data merge palette.
4. Create a template. Simply click on a field to insert it. Format it just like you would other text. Note that when the document is merged, all items on the page will be used in the merge. See Palette Menu: Content Placement Options for more options.

## **Data Merge: Performing the Merge**

5. Go to the Palette Menu and choose "Create Merged Document."
6. The default is one record per page. If this is your desired setting (envelopes, for example), simply click OK and you're finished!
7. If you wish to have multiple records on a single page, set "Records Per Document Page" to "multiple."
8. Go to the "Multiple Record Layout" tab and set margins, spacing, and flow.
9. Choose "Preview Multiple Record Layout" if you wish to see what the layout will look like while you adjust it.
10. Adjust other options as desired, and click OK.

## **Data Merge: Additional Notes**

- NOTE: If you edit your data file, you must go to the palette menu and choose "Update data source" to ensure that InDesign accesses your changes.
- Data Merge is currently incapable of working with facing pages. Hopfully this will be addressed in the near future; in the mean time, content must be repositioned if using different inside and outside margins.
- If your template is more than one page long, you cannot enable the multiple records per page option. (It makes sense - it is impossible to put more than one page multiple times on a single page!)