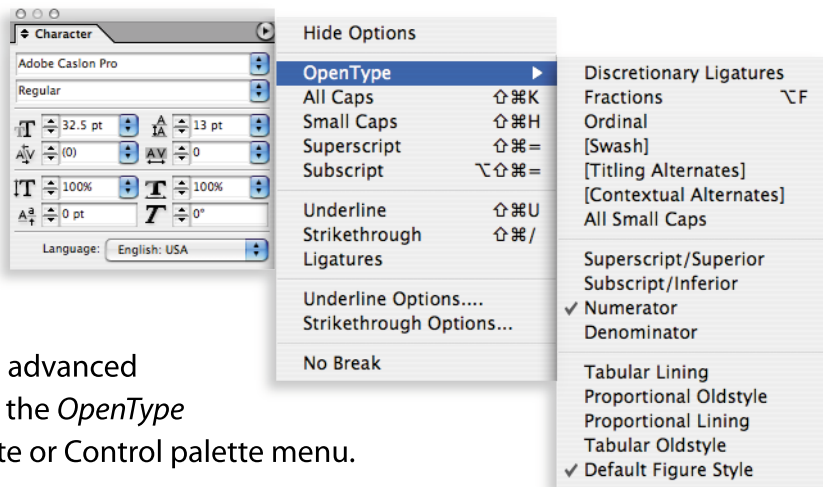


OpenType Typography *with* InDesign

- The OpenType font format was developed jointly by Adobe and Microsoft
- Four main benefits:
 1. Cross-platform compatibility
 2. One file per font
 3. Large character sets possible, Unicode support
 4. Advanced layout features

- OpenType fonts have the capacity for over 64,000 characters per font. So type designers have added extra swash, ornamental, fraction, and non-roman characters to some OpenType fonts. InDesign provides easy access to these advanced typography features through the *OpenType* option in the Character palette or Control palette menu.



Adobe adds the “Pro” designation to their fonts that have advanced OpenType features. The following roman OpenType “Pro” fonts are included with InDesign CS:

Adobe Caslon Pro regular, *italic*, **semibold**, *semibold italic*

Adobe Garamond Pro regular, *italic*, **semibold**, *semibold italic*

Adobe Jenson Pro regular, *italic*, **semibold**, *semibold italic*

Adobe Caflisch Script Pro regular

LITHOS PRO EXTRA LIGHT, LIGHT, REGULAR, **BOLD**, **BLACK**

Myriad Pro Light Condensed, *Light Condensed Italic*, Condensed, *Condensed Italic*, **Semibold Condensed**, *Semibold Condensed Italic*, **Bold Condensed**, *Bold Condensed Italic*, **Black Condensed**, *Black Condensed Italic*

TRAJAN PRO REGULAR, TRAJAN PRO BOLD

Advanced OpenType layout features of InDesign

Discretionary Ligatures
(Warnock Pro Italic) *Aspen active waffle status*
Aspen active waffle status

Fractions
(Cronos Pro Regular) 3 ¼ cups 5 ⅞ in. 13/16

Ordinal characters
(Adobe Jenson Pro Regular) 1st, 2nd, 3rd, 4th

Swash characters
(Adobe Caslon Pro Italic) *Cheesy Zamboni Macaroni*
Cheesy Zamboni Macaroni

Titling Alternates
(Adobe Garamond Pro Regular) THIS IS A TITLE
THIS IS A TITLE

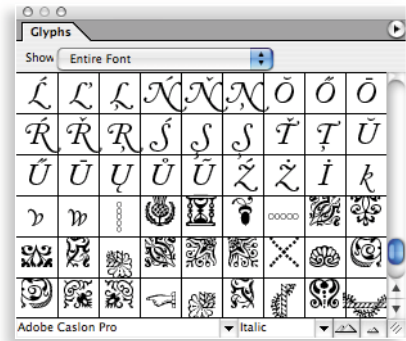
Contextual Alternates
(Caffisch Script Pro Regular) *These Elizabeth Effects*
These Elizabeth Effects

Small Caps
(Adobe Caslon Pro Regular) A REALLY CAPITAL IDEA
A REALLY CAPITAL IDEA

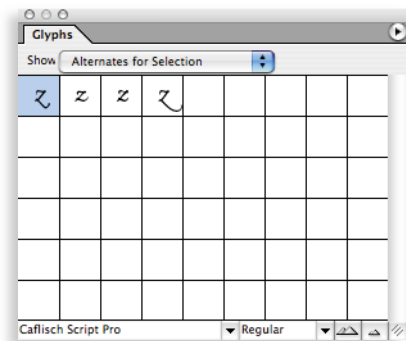
Oldstyle Figures
(Chaparral Pro Regular) another 1,346 people
another 1,346 people

Using the Glyphs palette

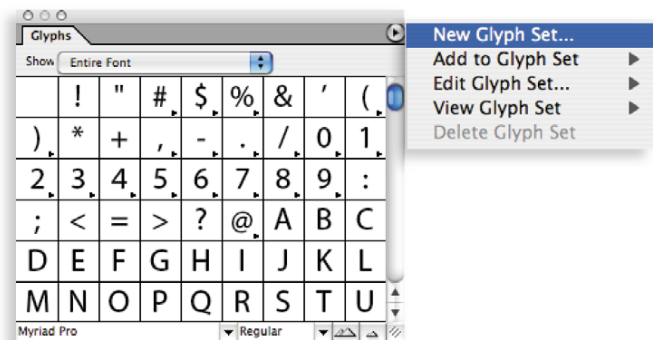
- Use the Glyphs palette (*Type > Glyphs*, or *Window > Type & Tables > Glyphs*) to identify and insert special characters unique to each font. This is particularly handy for OpenType fonts with large character sets, “Dingbat” fonts, symbol fonts, or foreign-language characters.



- If you wish to see all the alternate forms of a particular character, select the character on your page with the Type tool, then choose *Alternates for Selection* from the Show menu in the Glyphs palette. This will display all the alternate forms available for the selected character.



- You can combine Glyphs that you use frequently into your own “Glyph Set” by choosing *New Glyph Set* from the Glyphs palette menu.





Keith Gilbert, Gilbert Consulting
1466 Skiles Lane St. Paul, MN 55112-3619
651 633-7148 fax: 651 321-4915 kgilbert@gilbertconsulting.com
www.gilbertconsulting.com

Visit www.gilbertconsulting.com for more software tips, techniques, and resources!

Gilbert Consulting provides training and support services to help graphic designers and communicators convey print and Web messages effectively.

